

Infraset reticulation poles assist with safe power delivery

Prestressed concrete poles, manufactured by Infraset Infrastructure Products, have been successfully deployed for medium and low voltage reticulation at most of City Power's electrification projects in City of Johannesburg including, the Alexandra Metering Project and the Pennyville housing project.

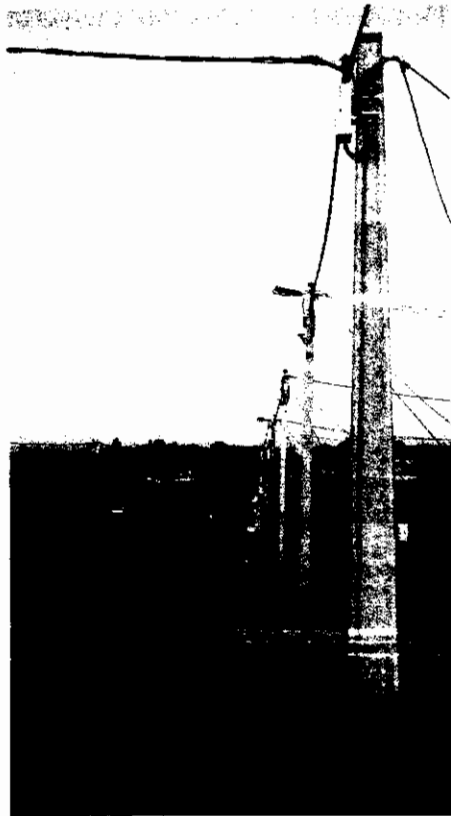
The Alexandra metering project entails the restoration of electricity supply to acceptably safe levels for both the customer and City Power. The project forms part of the normalisation of the Alexandra electricity network and the installation of remote prepayment metering and energy system for new

and existing houses.

Pennyville Greenfield project which entailed supplying electricity to approximately 3 000 newly constructed housing units

In most instances the poles were deployed using stayless technology i.e. no stays were necessary to support the poles. To date a total of 2 526 reticulation poles have been supplied for the Alexandra Metering Project. The poles were supplied to the three installation contractors, Malangeni Construction, Karebo Engineering and Tshepang Electrical.

Infraset supplied 1 771 poles to pole installation contractor, Kusokhanya



Alexandra, Gauteng, where these INFRASET concrete poles were installed as part of an electrification project.

Electrical, for the Pennyville project.

The poles are used to support the overhead Arial Bundle Conductor (ABC) to feed power to individual housing units on both projects.

Infraset railway products manager, Sizwe Mkhize, says that all the poles were manufactured with earthing bars (no additional earth conductor required) to protect them against lightning. He notes further that the high strength-to-weight ratio of prestressed electrification poles sets them apart from poles made from other materials.

The resilience of prestressed concrete poles enables them to recover from the effects of a greater degree of overload than any other type of structural material. And experience worldwide has demonstrated that during their lifetime, prestressed concrete poles are maintenance free - a major advantage. Unlike other materials, concrete suffers no loss of strength over the years, being

resistant to insects, fire, rot and corrosion.

'Our poles have an attractive rectangular tapered I-Section design and are cast in high-strength, high-density concrete with a smooth finish. They are functional yet relatively light, and this makes them convenient for contractors to handle,' says Mkhize.

Infraset Infrastructure Products
T +27 (0)11 813 2340

specifile library

SPECXpert

Next Issue:

Coating,
insulation and
water proofing

Windows,
doors and
accessories

Call for timber industry response to fresh challenges

With the reduced construction activity in the residential property market and signs that the commercial property market may be slowing, the call is for less expensive, time saving construction methods and materials.

In this scenario the structural timber industry finds itself being compared with alternative building materials.

Fundamentally, timber is eco-friendly in both production and use, it provides a plentiful and renewable source of structural material, it's strong and lightweight, erection time is rapid and it provides superior acoustics and good thermal insulation.

Also, its flexibility of use encourages creative design and easy changes during construction, it has long life where correctly treated (now there are new generation timber preservatives providing even more options), it costs less than alternatives, it's produced according to strict legislation, it uses minimal energy to produce so its carbon emissions 'footprint' is extremely low and of course it's aesthetically pleasing.

It's noteworthy that the steel-versus timber debate has manifested precisely at a time when new starts in the construction sector are significantly down.

No doubt structural material suppliers are under pressure along with the rest of the building materials industry

and their response is arguably one of seeking an increased share of a smaller market.

The time is therefore perhaps ripe for the various timber industry representative bodies and associations such as the Institute of Timber Construction, South African Wood Preservers' Association, Timber Frame Builders' Association and Forestry South Africa to take a common stand in this respect and to initiate a campaign of their own to present timber in a balanced fashion as a preferred building product.

The basic components of such a campaign could include a specifiers guide, drawing up framework for efficient, knowledgeable use of timber as a structural material and improving the understanding of timber and timber products.

Such a campaign would have to 'reach' numerous stakeholders such as specifiers, architects, structural engineers, QS's, building contractors and even the public.

There is room for the complete spectrum of structural materials and a dignified approach to the market place is required which would allow users to sensibly decide on their choice of material based on their specific needs.

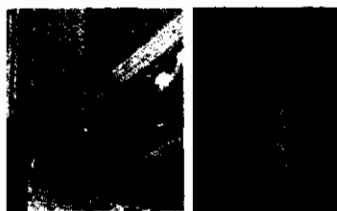
Arch Wood Protection SA
T +27(0)39 682 6019

specifile library

SPECXpert

NO BORER

Borer and Termites know no boundaries



Research uncovers substantial cases of insect infestation

THE FACTS: Marketing Research commissioned by Arch Wood Protection, and undertaken by Ipsos Markinor shows that over a 12 month period in Gauteng, Mpumalanga and Limpopo:

- 96% of pest controllers reported cases of subterranean termites
- 65% reported drywood termite infestation
- 55% reported cases of wood borer

Arch Wood Protection underwrites a 50 year guarantee against insect attack and wood decay on timber pressure treated with its Tanalised® C timber preservative (CCA).



PRESSURE TREATED WOOD

If you have not specified treated timber, now is the time to rethink.

Visit www.tanalised.com/sa to find your closest stockist.



Arch Wood Protection

www.tanalised.com/sa • Email: info@archchemicals.com
16 Indus Road, Marburg • Port Shepstone
P O Box 54344, Marburg, 4252 • South Africa
Tel: +27 (0)39 682 6019 • Fax: +27 (0)39 682 6022

EMPOWERDEX
Business Empowerment Action Agency



ISO 9001:2000
ISO 14001:2004

specifile library

SPECXpert